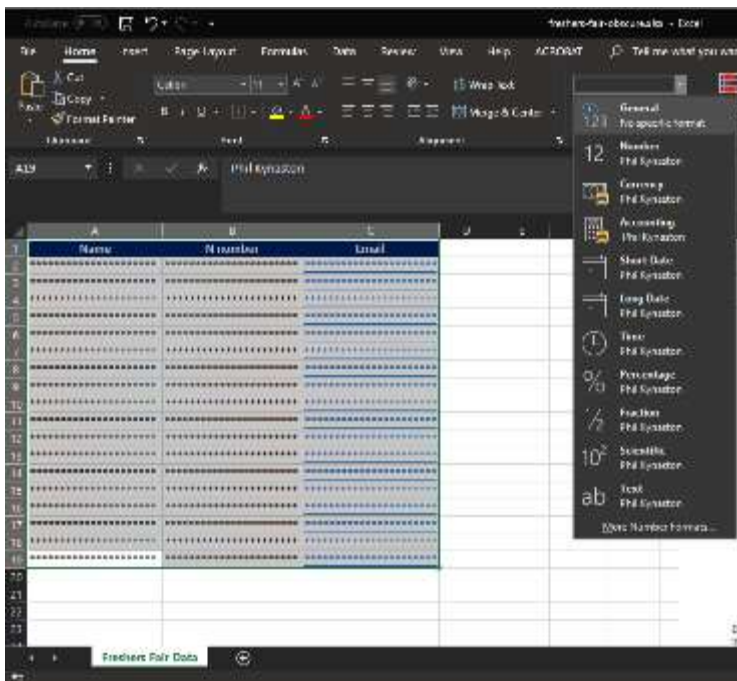




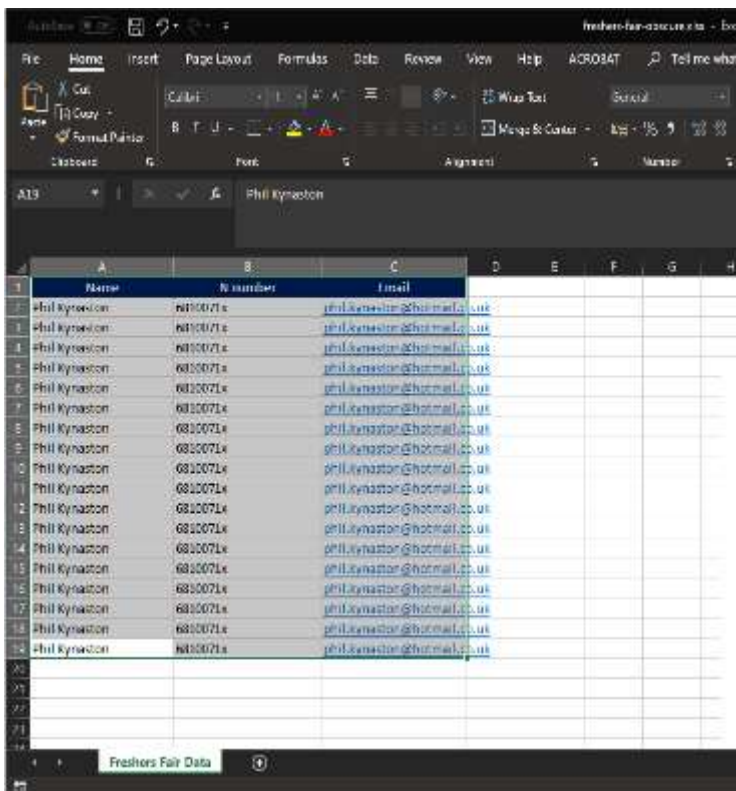
## Batch unlock

To temporarily reveal the information on lots of cells



Highlight the cells in question  
Click general in the referenced box  
This is required if you need to copy the information.

Please use the information responsibly

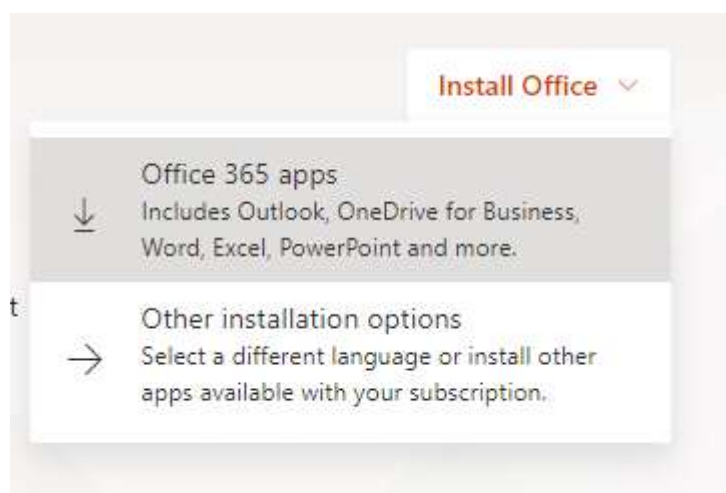
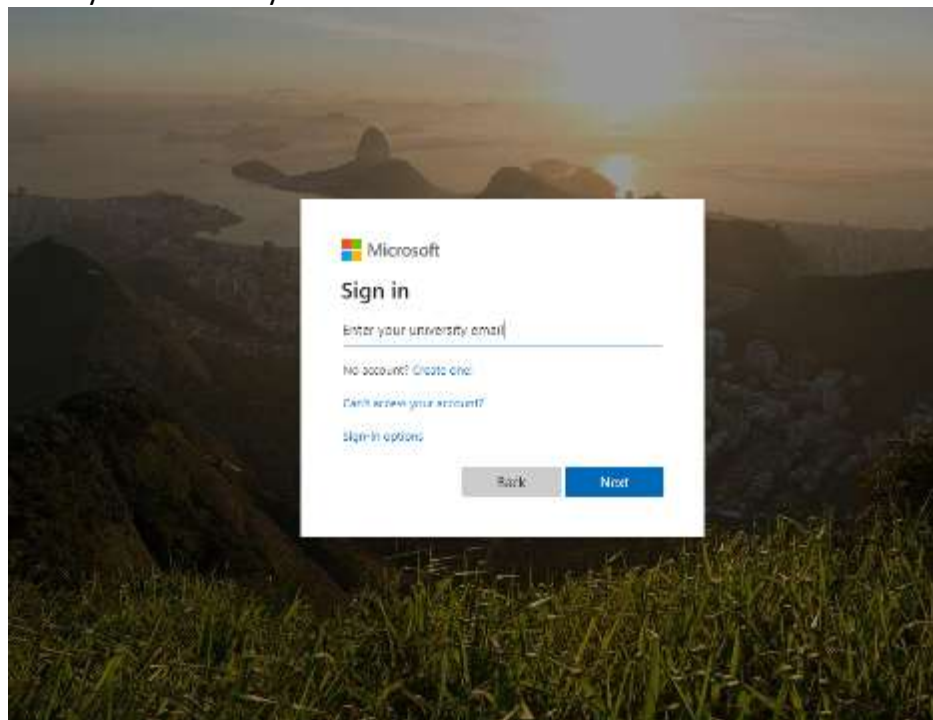


To rehide simply press Ctrl (Cmd on macOS) + Z

## How to get Microsoft Office for FREE

Go to <https://portal.office.com>

Enter your university email



Click the following option in the top right-hand corner.

Load the downloaded file.

Follow the on-screen instructions